



CONTACT US @ 855-355-2724  
E-Mail: [Sales@brahelectric.com](mailto:Sales@brahelectric.com)  
[www.Brahelectric.com](http://www.Brahelectric.com)

## PRODUCT DATA SHEET



**PART NUMBER – B3TF4622-0AK6:** BRAH Electric, aftermarket direct replacement contactors for Siemens 3TF4622-0AK6, World Series, type 3TF, 3P, 3PH, 45A, 600V, 20HP @ 230V, 40HP @ 460V, 50HP @ 575V, complete with 110/120V AC coil, 2 N/O - 2 N/C auxiliary contact, AC magnetic contactor, suitable for use with 3TF series motor control systems

### PRODUCT SPECIFICATIONS

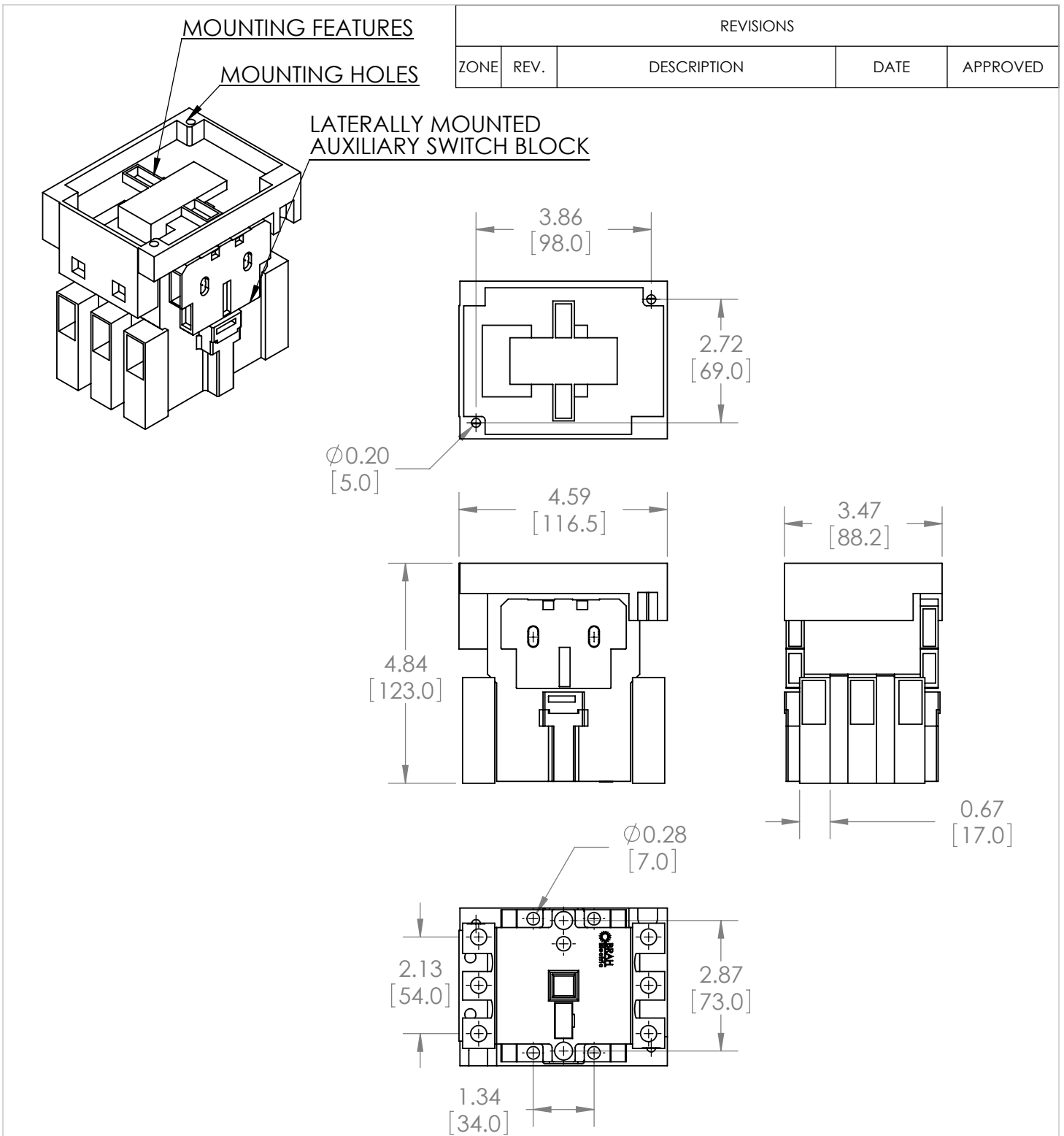
MAGNETIC CONTACTOR  
PART NO. B3TF4622-0AK6

TYPE	VALUE (UNITS)	NOTES	COMMENTS
PHASE	3		
POLES	3		
VOLTAGE	600 (VAC)		
AMPERAGE	45 (A)		
COIL VOLTAGE MIN	110 (V)		
COIL VOLTAGE MAX	120 (V)		
MIN HP. RATING	20 (HP)	@ 230V	
MAX HP RATING	50 (HP)	@ 575V	

#### ADDITIONAL INFORMATION:

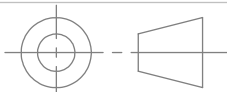

\* We use fine quality silver for our contacts, containing 95% silver content

**Warranty:** All Products sold by BRAH Electric are guaranteed to be free of defect for a period of one year, under the condition that the product has been installed and operated properly. All items proven defective within the one year period will be replaced by BRAH Electric. In the event that we cannot provide a direct replacement, your monies will be refunded in full. We are not responsible for any consequential losses or damages outside of the defective product as well as any replacements or repairs performed by another party without our written authorization from BRAH Electric.



[WWW.BRAHELECTRIC.COM](http://WWW.BRAHELECTRIC.COM), 855-355-2724

\*NOTE: BRAH ELECTRIC CONTACTOR B3TF4622-0AK6 IS AN AFTERMARKET DIRECT REPLACEMENT FOR 3TF4622-0AK6, 3TF SERIES. SUITABLE FOR USE WITH 3TF SERIES MOTOR CONTROL SYSTEMS

 <p>THIRD ANGLE PROJECTION</p>	<p>UNLESS OTHERWISE NOTED</p> <p>ALL DIMENSIONS ARE IN INCHES METRIC UNITS ARE DISPLAYED BENEATH IN [ MM. ]</p>			
<p><b>PROPRIETARY AND CONFIDENTIAL</b></p> <p>THE INFORMATION CONTAINED IN THIS DRAWING IS THE SOLE PROPERTY OF BRAH ELECTRIC. ANY REPRODUCTION IN PART OR AS A WHOLE WITHOUT THE WRITTEN PERMISSION OF BRAH ELECTRIC IS PROHIBITED.</p>	<p>MATERIAL</p> <p>MOLDED PLASTIC CASE</p>	<p>MAGNETIC CONTACTOR</p>		
	<p>FINISH</p> <p>N/A</p>			
	<p>DO NOT SCALE DRAWING</p>	<p>SIZE</p> <p><b>A</b></p>	<p>DWG. NO.</p> <p>B3TF4622-0AK6</p>	<p>REV.</p> <p><b>A</b></p>
<p>SCALE:1:3</p>		<p>WEIGHT: 3.2 LBS</p>	<p>SHEET 1 OF 1</p>	